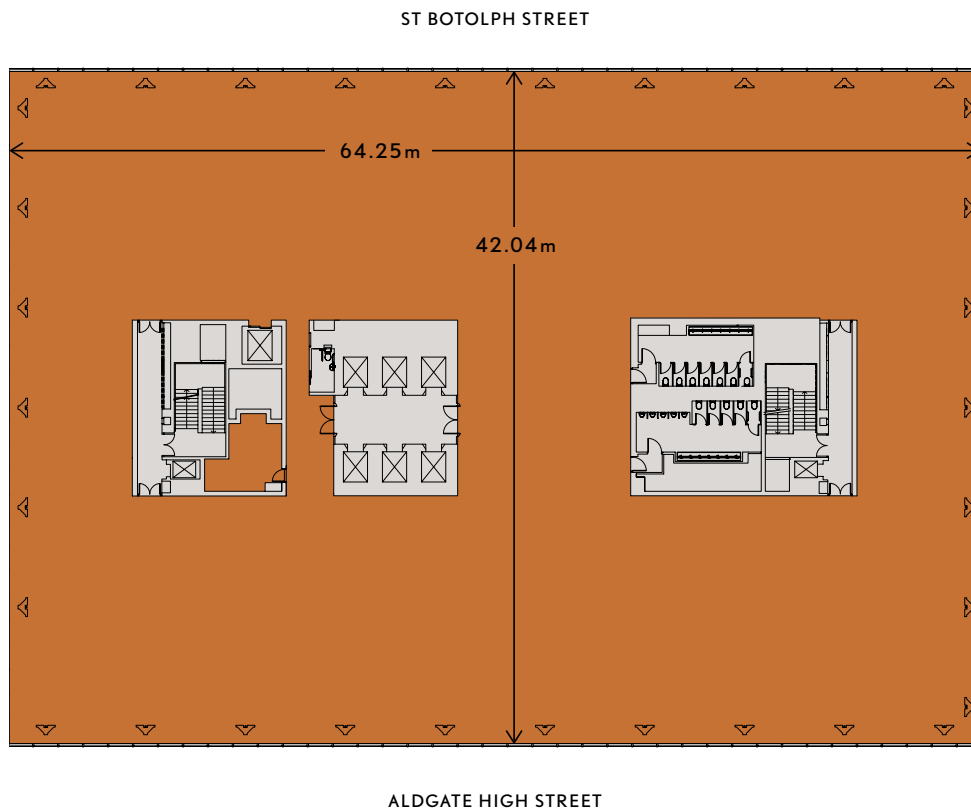




ALDGATE HOUSE

TYPICAL UPPER FLOOR (1ST)

26,190 Sq Ft — 2,433.1 Sq M



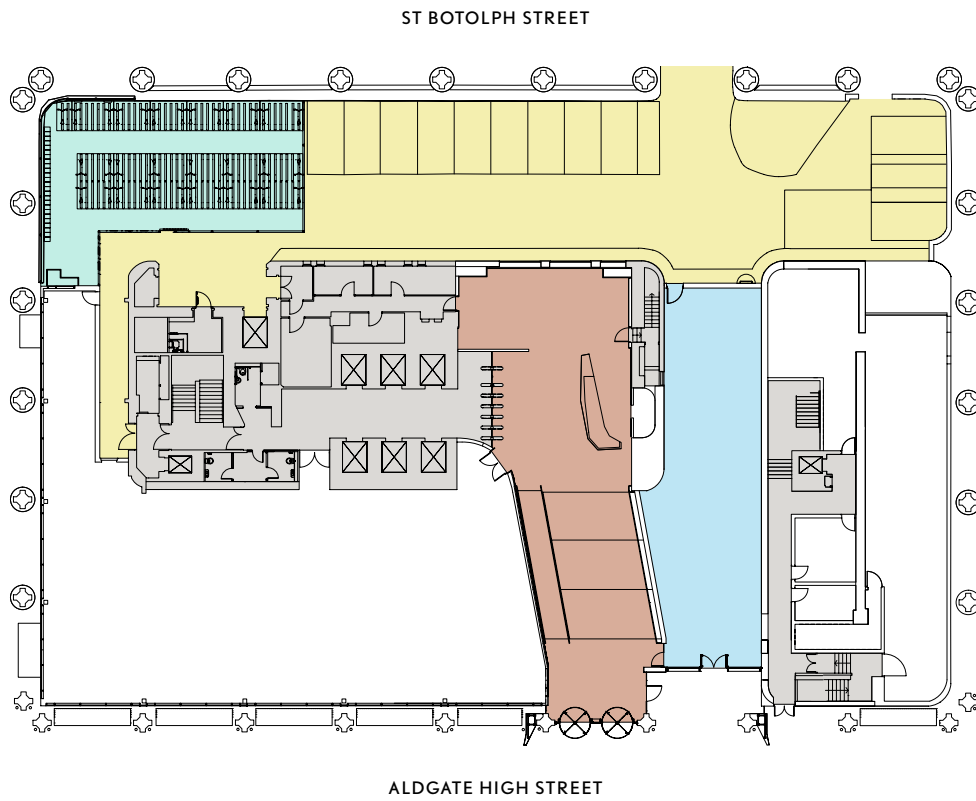
For indicative purposes only. Not to scale.





ALDGATE HOUSE

GROUND FLOOR



- RECEPTION & LOUNGE
- CAFÉ
- CYCLE STORAGE & LOCKERS
- CAR PARKING / LOADING BAY

For indicative purposes only. Not to scale.





ALDGATE HOUSE

LOWER GROUND FLOOR

ST BOTOLPH STREET



ALDGATE HIGH STREET

■ SHOWERS

For indicative purposes only. Not to scale.

